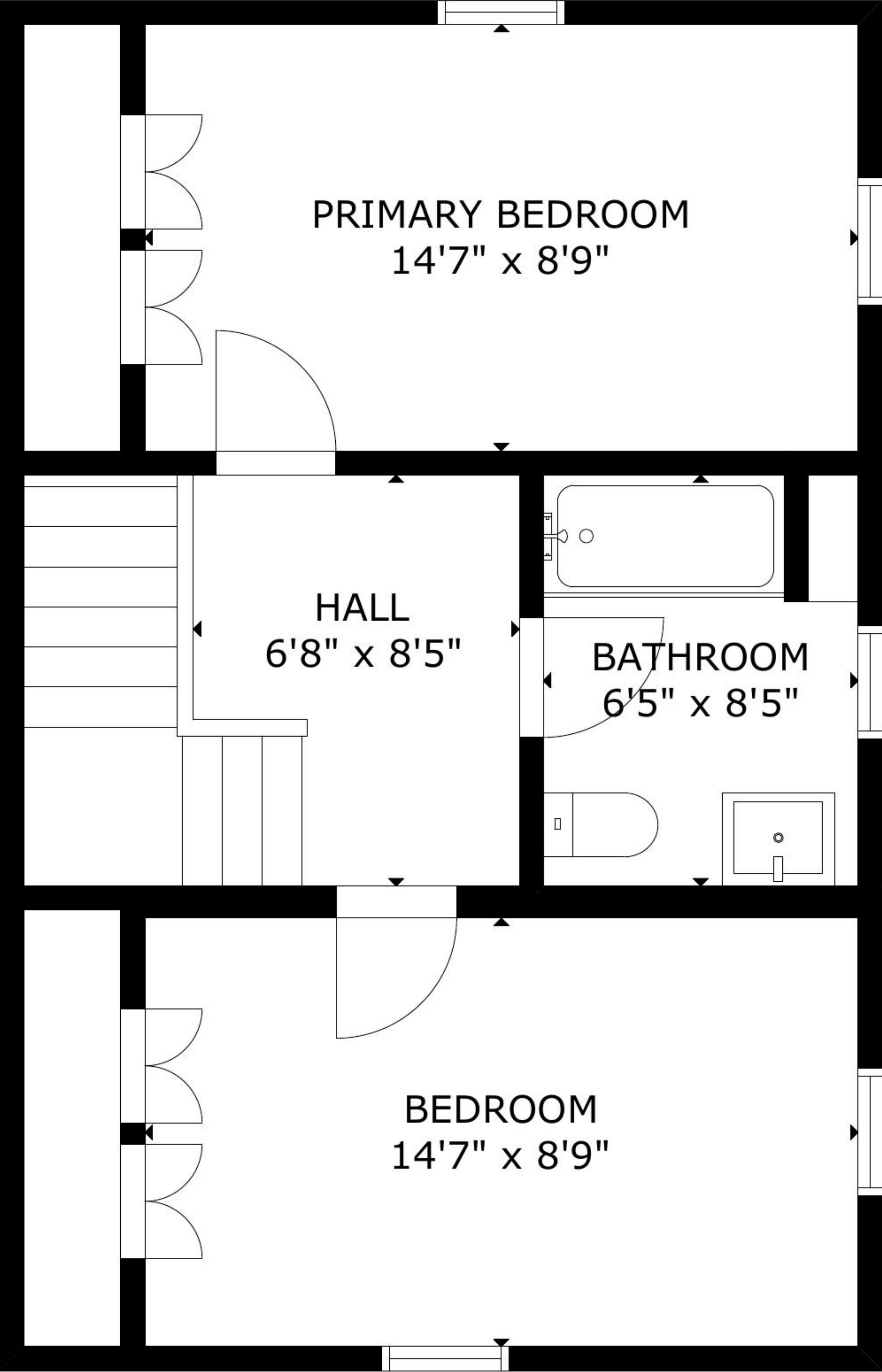


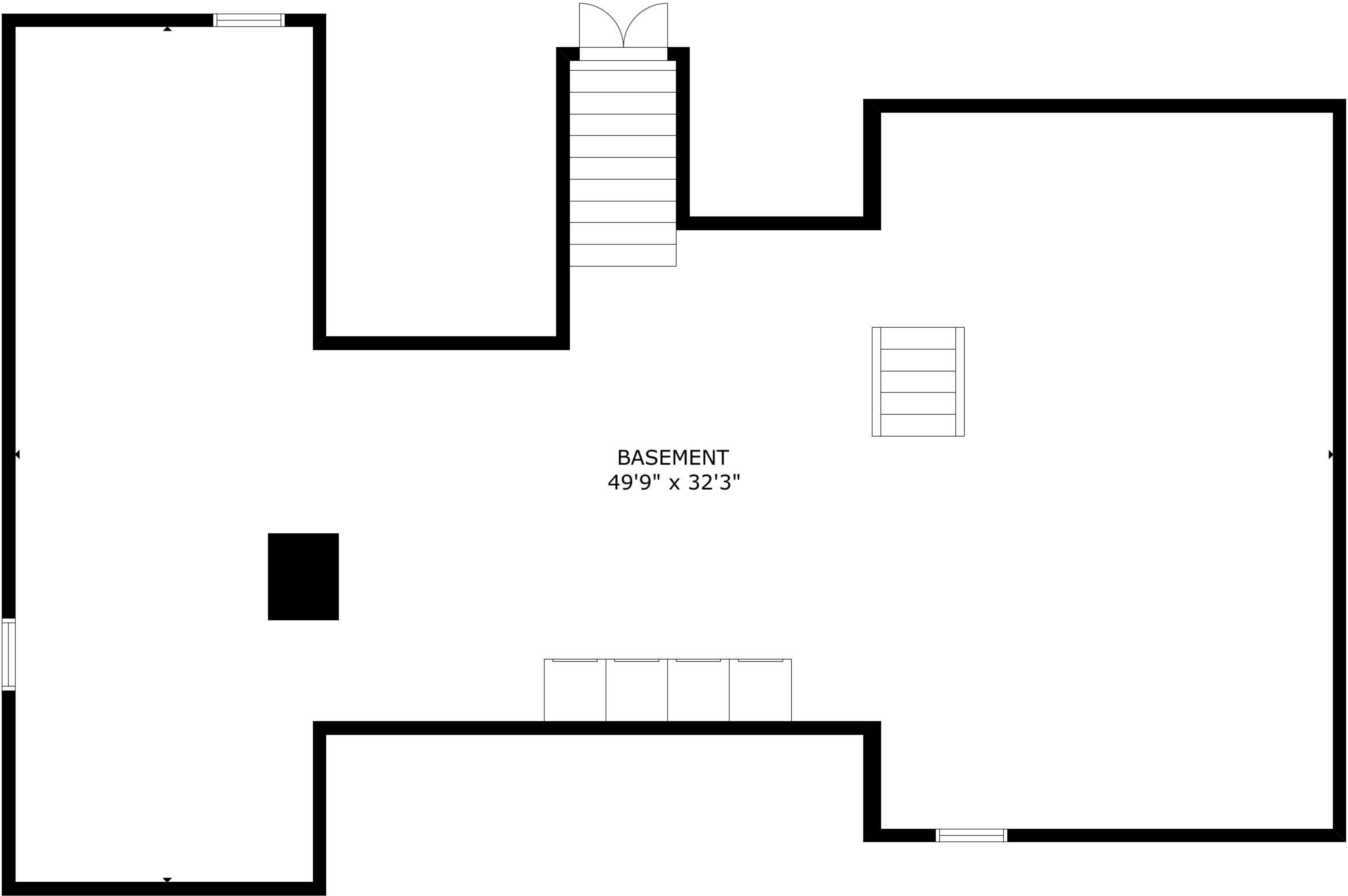
GROSS INTERNAL AREA
TOTAL: 2,873 sq ft

BASEMENT: 1,204 sq ft, FIRST FLOOR: 1,207 sq ft, SECOND FLOOR: 462 sq ft
SIZE AND DIMENSIONS ARE APPROXIMATE, ACTUAL MAY VARY



GROSS INTERNAL AREA
TOTAL: 2,873 sq ft

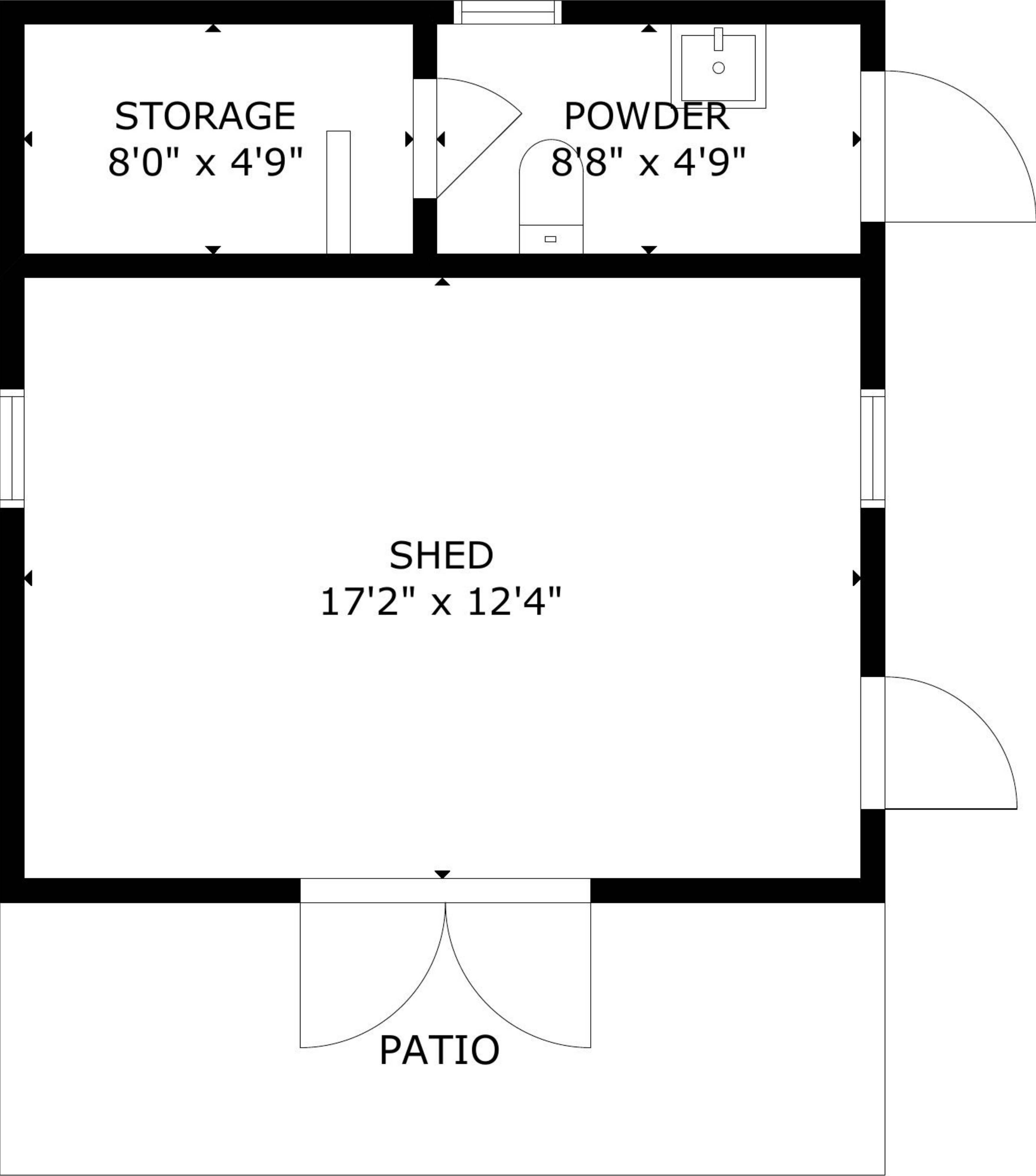
BASEMENT: 1,204 sq ft, FIRST FLOOR: 1,207 sq ft, SECOND FLOOR: 462 sq ft
SIZE AND DIMENSIONS ARE APPROXIMATE, ACTUAL MAY VARY



BASEMENT
49'9" x 32'3"

GROSS INTERNAL AREA
TOTAL: 2,873 sq ft

BASEMENT: 1,204 sq ft, FIRST FLOOR: 1,207 sq ft, SECOND FLOOR: 462 sq ft
SIZE AND DIMENSIONS ARE APPROXIMATE, ACTUAL MAY VARY



GROSS INTERNAL AREA
TOTAL: 294 sq ft
SHED: 294 sq ft

SIZE AND DIMENSIONS ARE APPROXIMATE, ACTUAL MAY VARY