

**FIRST FLOOR**  
 CEILING HEIGHT: 8'10"

FIRST FLOOR INT: 2089 SQ FT  
 FIRST FLOOR OUT: 1166 SQ FT  
 GARAGE: 809 SQ FT

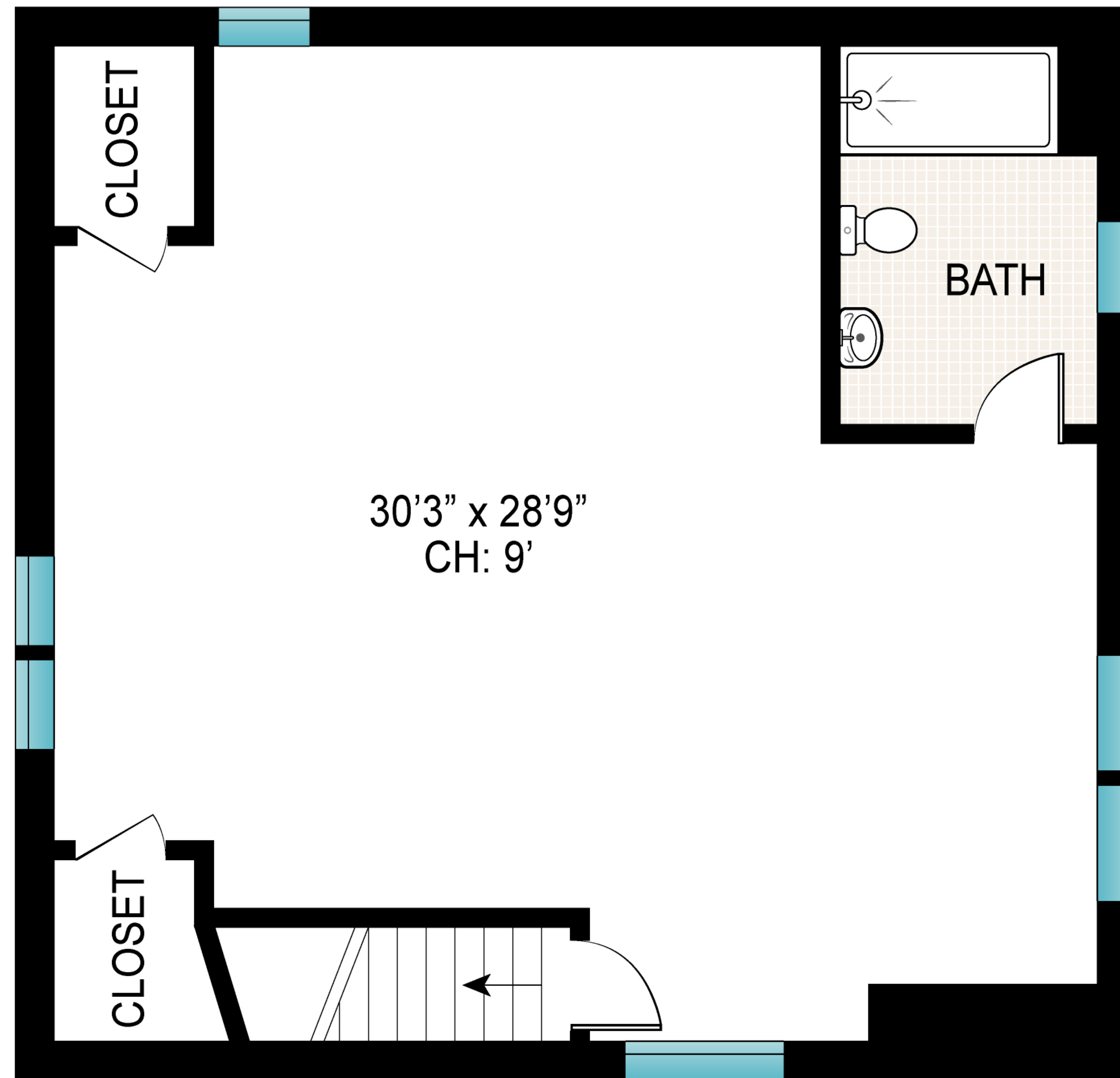
Scale in feet. Indicative only. Dimensions are approximate. All information contained herein is gathered from sources we believe to be reliable. However, we cannot guarantee its accuracy and interested persons should rely on their own inquiries.



**SECOND FLOOR**  
 CEILING HEIGHT: 16'2"

SECOND FLOOR INT: 1885 SQ FT  
 SECOND FLOOR OUT: 432 SQ FT

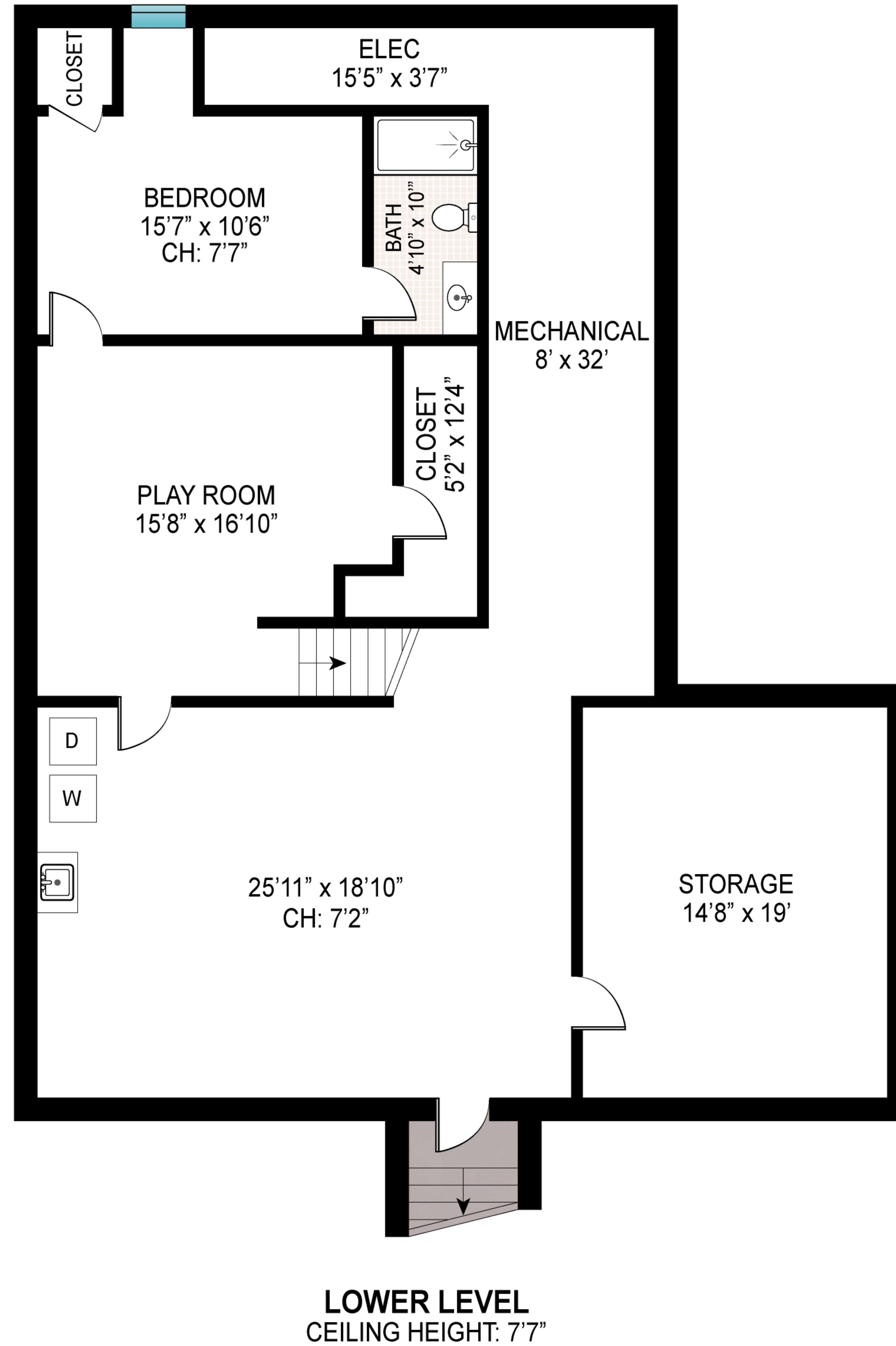
Scale in feet. Indicative only. Dimensions are approximate. All information contained herein is gathered from sources we believe to be reliable. However, we cannot guarantee its accuracy and interested persons should rely on their own inquiries.



**SECOND FLOOR**  
CEILING HEIGHT: 9'

SECOND FLOOR INT: 876 SQ FT

Scale in feet. Indicative only. Dimensions are approximate. All information contained herein is gathered from sources we believe to be reliable. However, we cannot guarantee its accuracy and interested persons should rely on their own inquiries.



LOWER LEVEL: 1707 SQ FT

Scale in feet. Indicative only. Dimensions are approximate. All information contained herein is gathered from sources we believe to be reliable. However, we cannot guarantee its accuracy and interested persons should rely on their own inquiries.