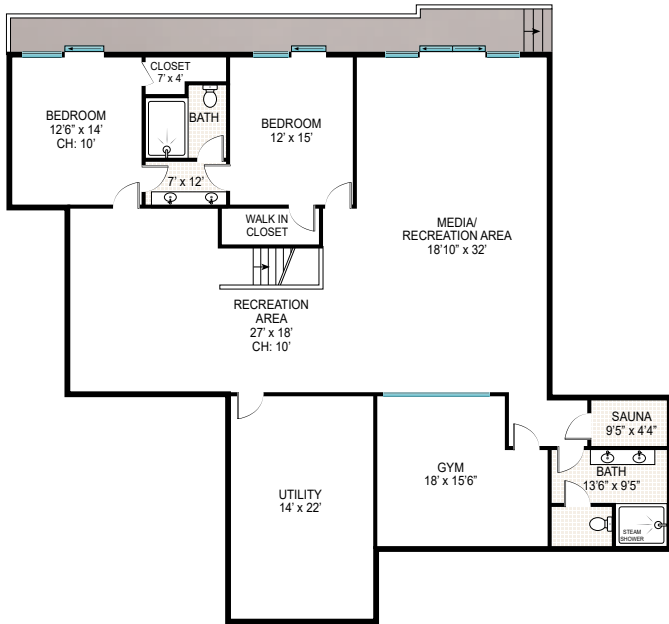


SECOND FLOOR



LOWER LEVEL
CEILING HEIGHT: 10'



FIRST FLOOR

FIRST FLOOR INT: 2,632 SQFT
 FIRST FLOOR OUT: 1,653 SQFT
 SECOND FLOOR INT: 2,452 SQFT
 SECOND FLOOR OUT: 228 SQFT
 LOWER LEVEL: 2,416 SQFT
 GARAGE: 462 SQ FT
 POOL: 1000 SQ FT
 TOTAL INT: 7,962 SQ FT
 TOTAL OUT: 2,681 SQ FT
 TOTAL: 10,843 SQ FT



Scale in feet. Indicative only. Dimensions are approximate. All information contained herein is gathered from sources we believe to be reliable. However, we cannot guarantee its accuracy and interested persons should rely on their own inquiries.