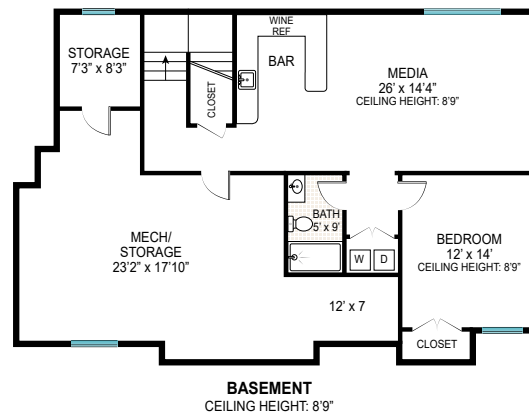
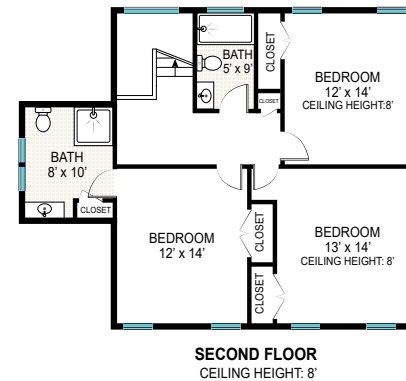


**FIRST FLOOR**



**BASEMENT**  
CEILING HEIGHT: 8'9"



**SECOND FLOOR**  
CEILING HEIGHT: 8'

FIRST FLOOR INT: 1,768 SQ FT  
 FIRST FLOOR OUT: 1,200 SQ FT  
 SECOND FLOOR INT: 1,100 SQ FT  
 FINISHED PART BASEMENT: 868 SQ FT  
 UNFINISHED PART BASEMENT: 557 SQ FT  
 SCREEN PORCH: 167 SQ FT  
 GARAGE: 365 SQ FT  
 POOL: 720 SQ FT  
 TOTAL INT: 4,825 SQ FT  
 TOTAL OUT: 1,920 SQ FT  
 TOTAL: 6,745 SQ FT



Scale in feet. Indicative only. Dimensions are approximate. All information contained herein is gathered from sources we believe to be reliable. However, we cannot guarantee its accuracy and interested persons should rely on their own inquiries.