

FIRST FLOOR INT: 1,453 SQFT
 FIRST FLOOR OUT: 728 SQFT
 SECOND FLOOR INT: 600 SQFT
 GARAGE: 304 SQFT
 POOL: 800 SQFT
 ATTIC: 343 SQFT
 TOTAL INT: 2,700 SQFT
 TOTAL OUT: 1,528 SQFT
 TOTAL: 4,228 SQFT



Scale in feet. Indicative only. Dimensions are approximate. All information contained herein is gathered from sources we believe to be reliable. However, we cannot guarantee its accuracy and interested persons should rely on their own inquiries.

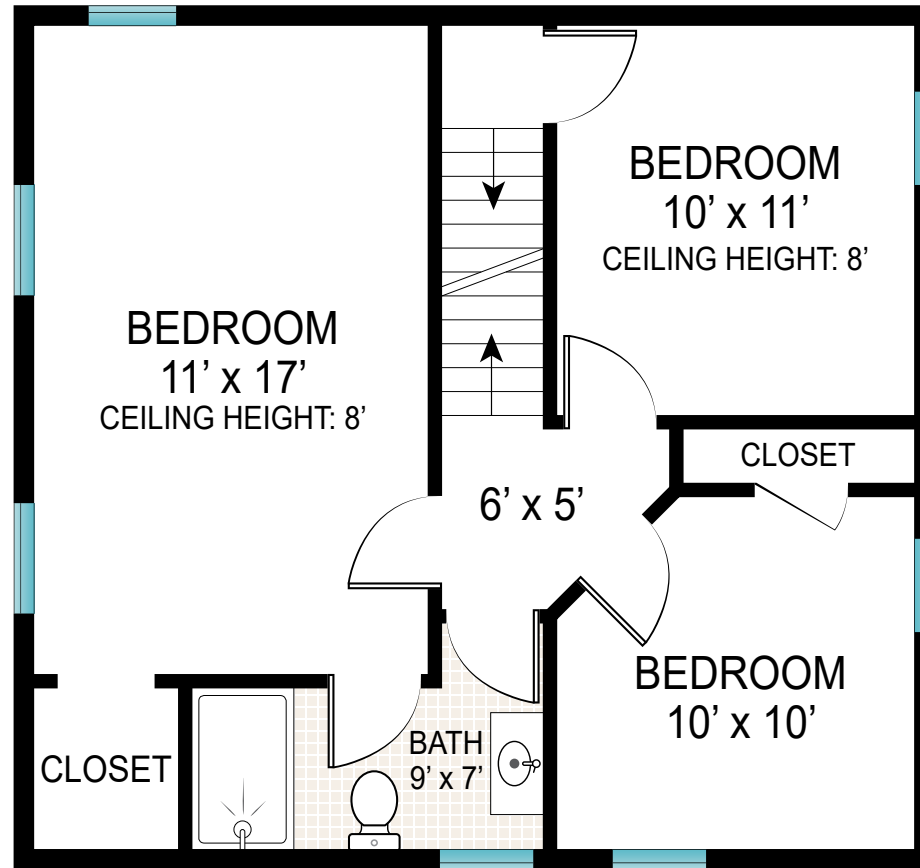


FIRST FLOOR
CEILING HEIGHT: 8'

FIRST FLOOR INT: 1,453 SQFT
 FIRST FLOOR OUT: 728 SQFT
 GARAGE: 304 SQFT
 POOL: 800 SQFT



Scale in feet. Indicative only. Dimensions are approximate. All information contained herein is gathered from sources we believe to be reliable. However, we cannot guarantee its accuracy and interested persons should rely on their own inquiries.

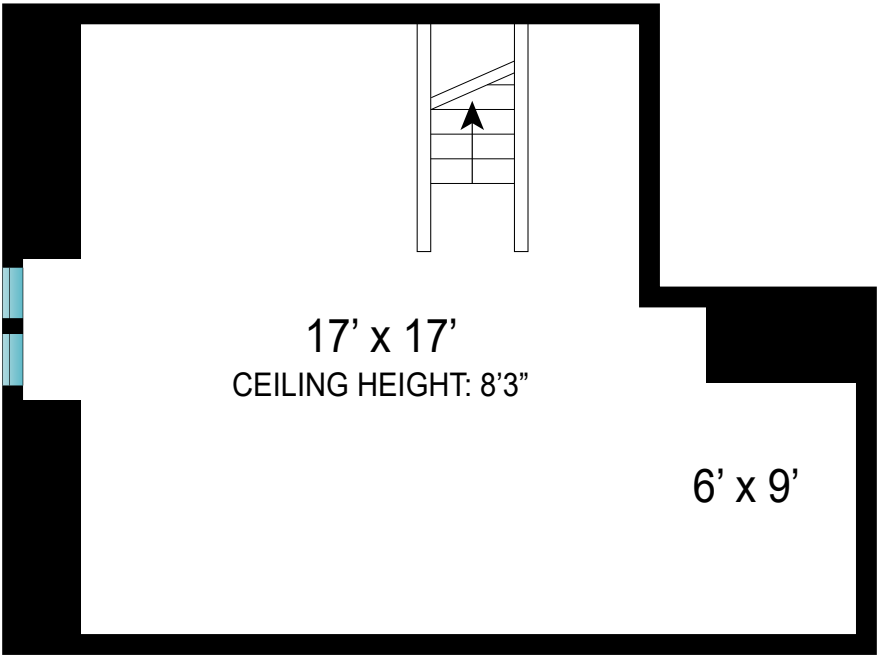


SECOND FLOOR
CEILING HEIGHT: 8'

SECOND FLOOR INT: 600 SQFT

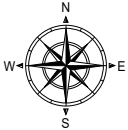


Scale in feet. Indicative only. Dimensions are approximate. All information contained herein is gathered from sources we believe to be reliable. However, we cannot guarantee its accuracy and interested persons should rely on their own inquiries.



ATTIC
CEILING HEIGHT: 8'3"

ATTIC: 343 SQFT



Scale in feet. Indicative only. Dimensions are approximate. All information contained herein is gathered from sources we believe to be reliable. However, we cannot guarantee its accuracy and interested persons should rely on their own inquiries.