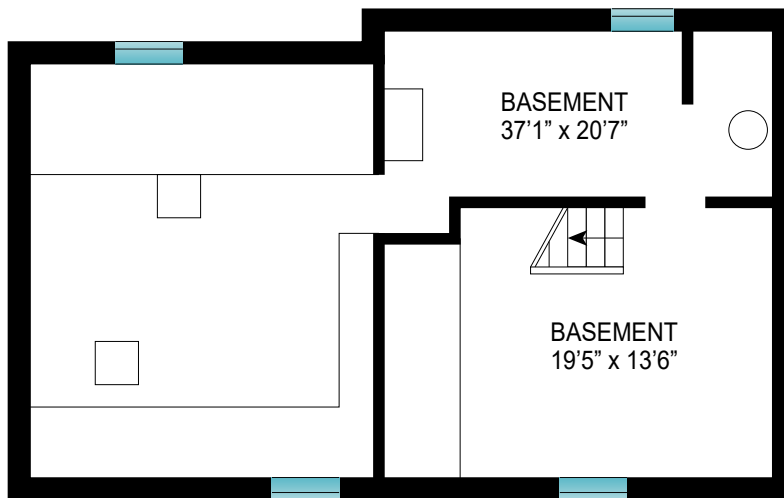
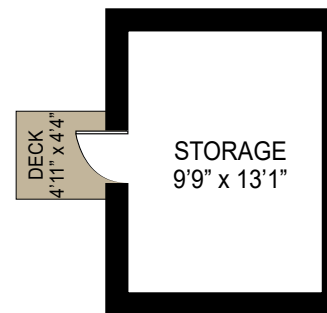


FIRST FLOOR
CEILING HEIGHT: 8'



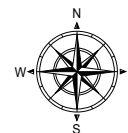
BASEMENT
CEILING HEIGHT: 6'4"



SECOND FLOOR

BASEMENT: 795 SQ FT
 FIRST FLOOR: 1249 SQ FT
 STORAGE/ SHED: 127 SQ FT

DECK: 446 SQ FT
 TOTAL: 2617 SQ FT



Scale in feet. Indicative only. Dimensions are approximate. All information contained herein is gathered from sources we believe to be reliable. However, we cannot guarantee its accuracy and interested persons should rely on their own inquiries.