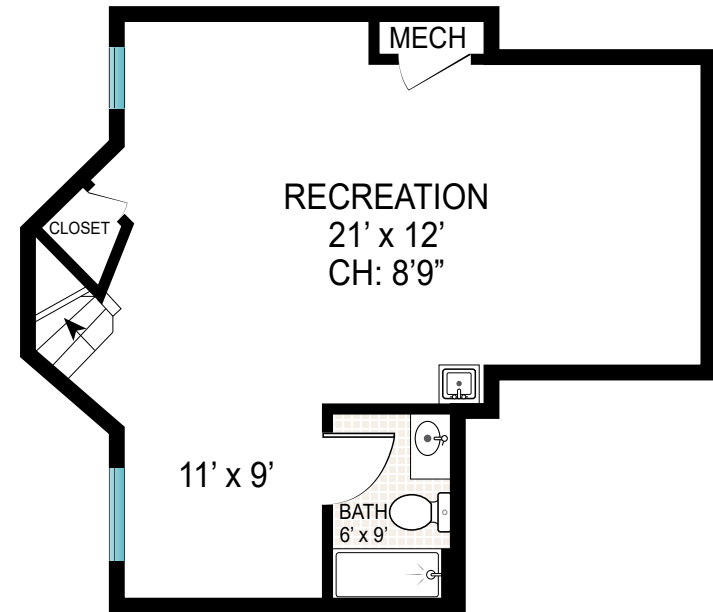


BASEMENT/ UTILITY
CEILING HEIGHT: 8'9"



REC ROOM LOWER LEVEL

REC ROOM LOWER LEVEL: 612 SQ FT
BASEMENT/ UTILITY: 888 SQ FT



Scale in feet. Indicative only. Dimensions are approximate. All information contained herein is gathered from sources we believe to be reliable. However, we cannot guarantee its accuracy and interested persons should rely on their own inquiries.